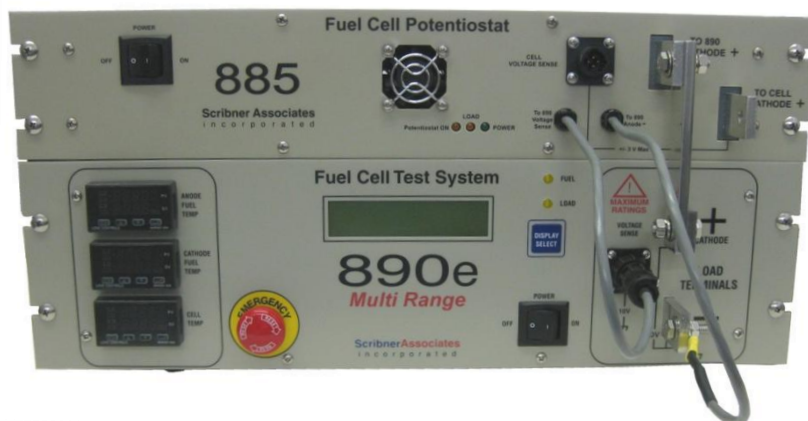
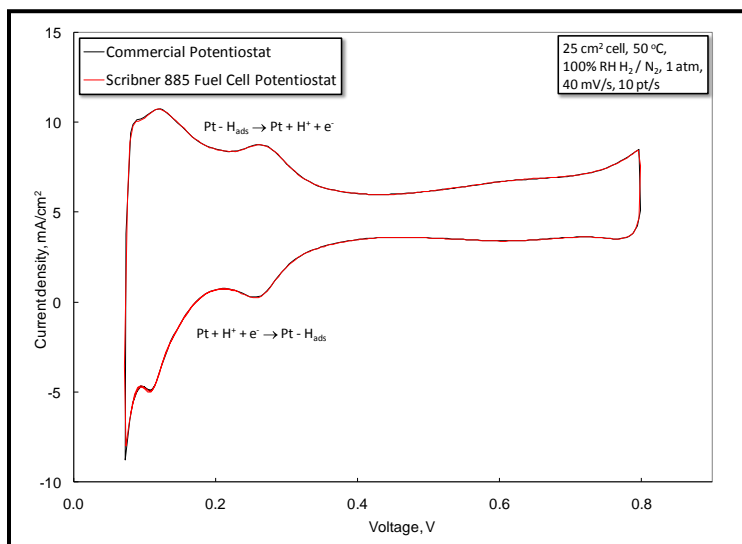


885 FUEL CELL POTENTIOSTAT

- ✓ **Integrated Potentiostat for Scribner Associates' Fuel Cell Test Systems**
 - 850C/e or 890CL/e
- ✓ **Automated Switching between Load and Potentiostat Operation**
 - No More Swapping Leads to Use Potentiostat Functions
- ✓ **Perform Experiments within *FuelCell*[®]**
 - Voltammetry for Fuel Crossover & Electrochemical Surface Area
 - Potential Cycling for Electrode & Catalyst Support Durability Test
 - Low Current Capability for High Accuracy Tafel Experiments
- ✓ **Data Analysis with *FCView*[™] & *CorrView*[™]**



NEW



SPECIFICATIONS:

Cell Connections 2, 3 or 4 terminal

Working Electrode
 Current Ranges 2 A, 200 mA, 20 mA
 Resolution 122 μ A (2 A FS) to 1.22 μ A (20 mA FS)

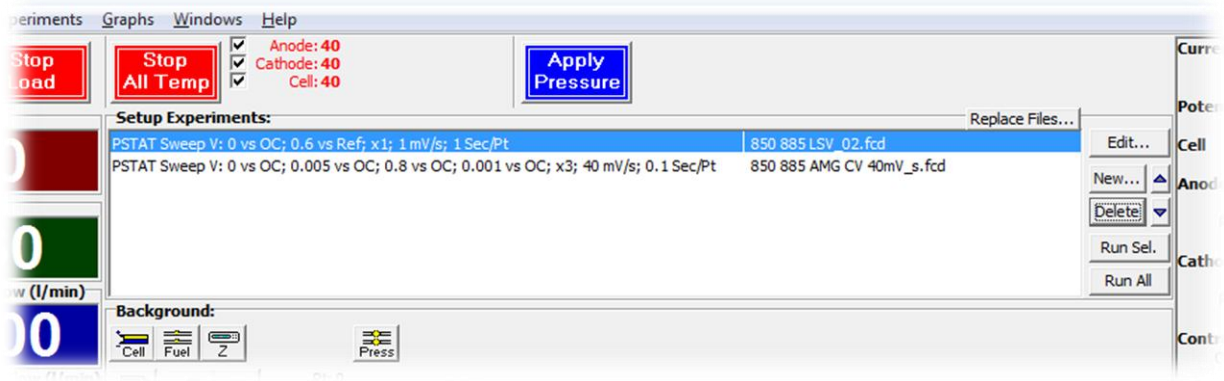
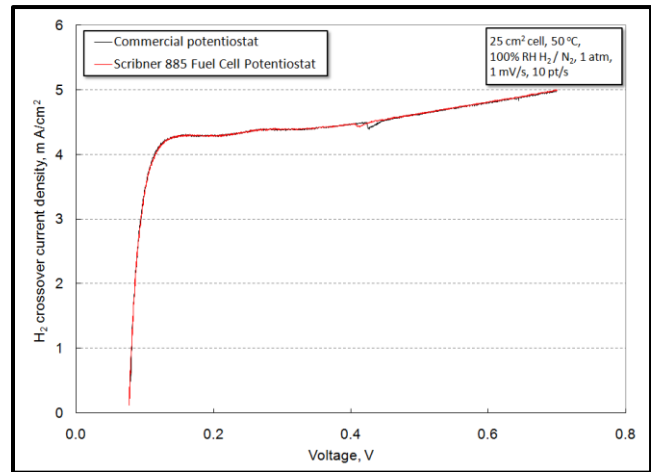
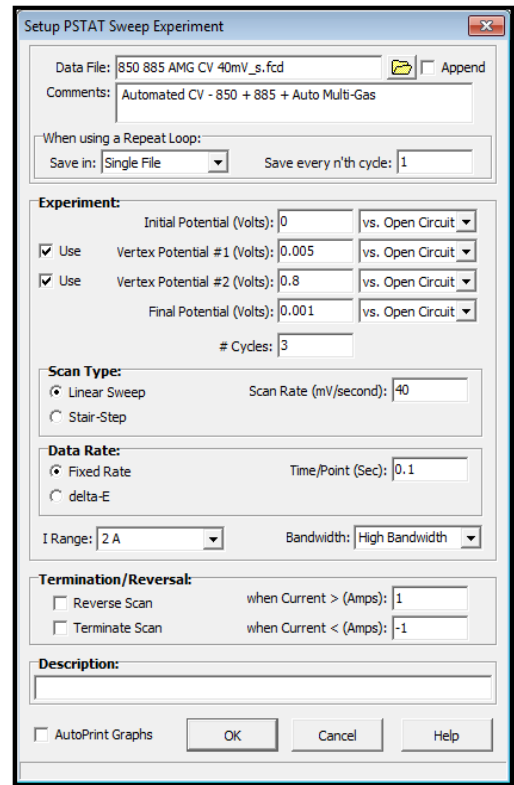
Counter Electrode
 Output Voltage vs. WE \pm 3
 \pm 2 A
(short circuit protected)

Reference Electrode
 Type Differential w/ driven shields
 Input V range -3 to +3 V
 Differential Input -3 to +3 V
 Resolution 152 μ V
 Capacitance 150 pF
 Limit of Error 0.3% of reading + 3 mV

DC Polarization
 Voltage Range -3 to +3 V
 Limit of Error 0.25%
 Resolution 125 μ V

Sweep Functions
 Scan Rate 1 mV/s to 1 V/s

Data Acquisition Speed 10 points/s



Specifications for 25 °C ambient temperature unless otherwise noted. Price and/or specifications subject to change without notice.



150 E. Connecticut Avenue, Southern Pines, North Carolina 28387 USA
 p: +1-910-695-8884 · f: +1-910-695-8886 · www.scribner.com · info@scribner.com