

Membrane Test System – 740 MTS

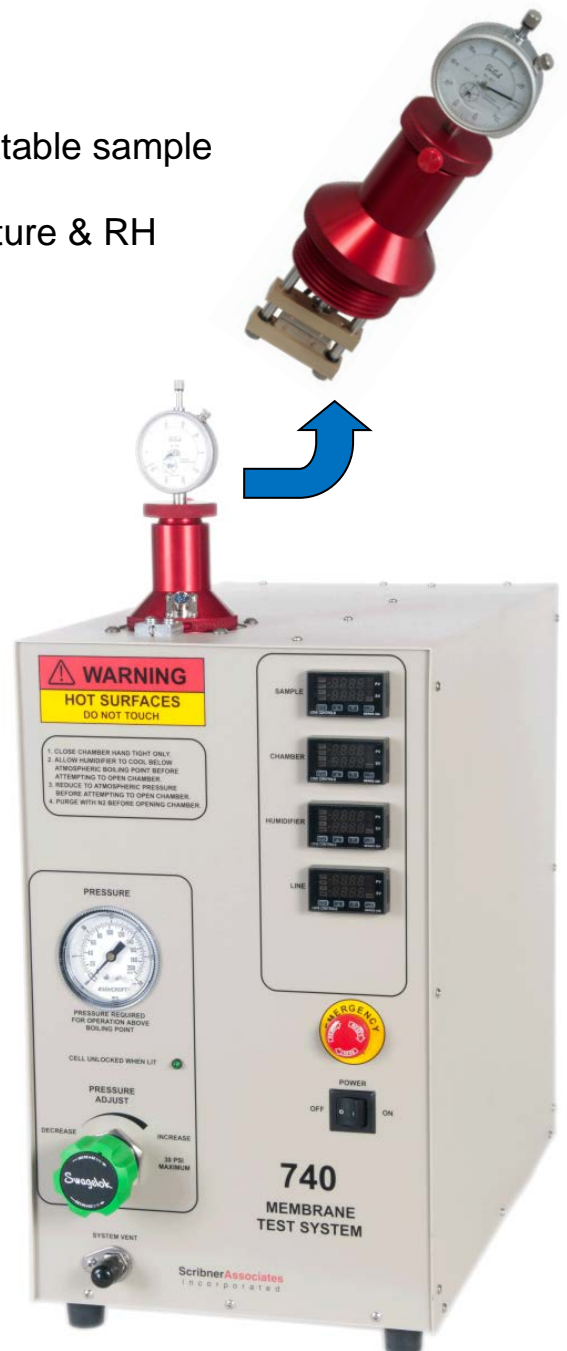
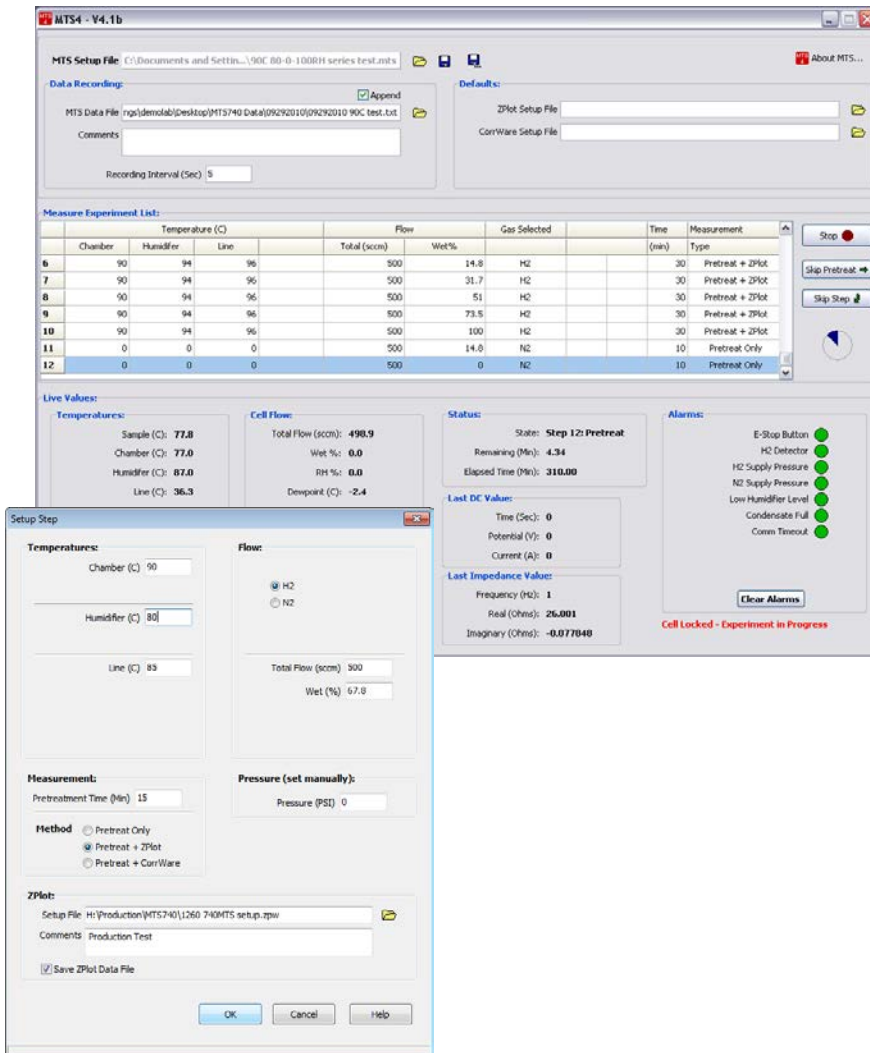
A Versatile Tool for Membrane R&D and Manufacturing QC

The 740 MTS is ideally suited for development of new ionomers and solid electrolytes. It offers rapid and accurate measurement of the through-thickness membrane resistance and conductivity as a function of temperature, humidity and pressure.

The MTS eliminates the time consuming approach of catalyzing a membrane and assembling a fuel cell to evaluate the ionomer performance.

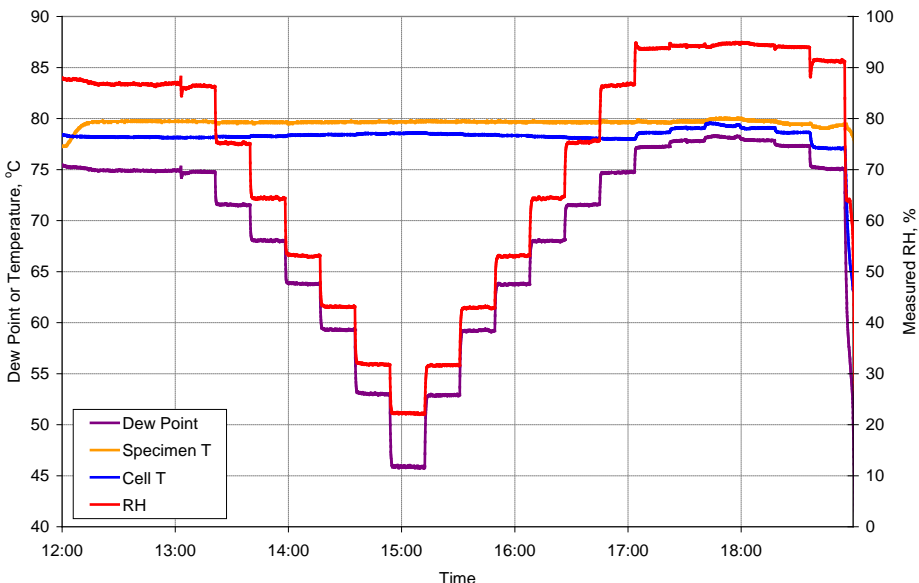
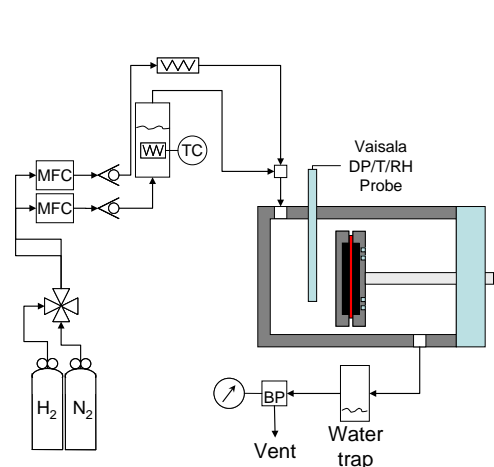
Benefits and Features

- ✓ Uses bare (non-catalyzed) membranes
- ✓ Small sample size 6 mm x 30 mm
- ✓ Spring-loaded sample compression - easy, repeatable sample loading up to 400 PSI (2.76 MPa)
- ✓ Rapidly characterize samples over wide temperature & RH
- ✓ Robust method - accurate, repeatable & reliable
- ✓ Multiple alarms for safe operation

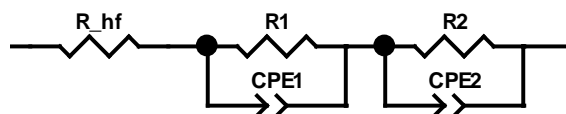
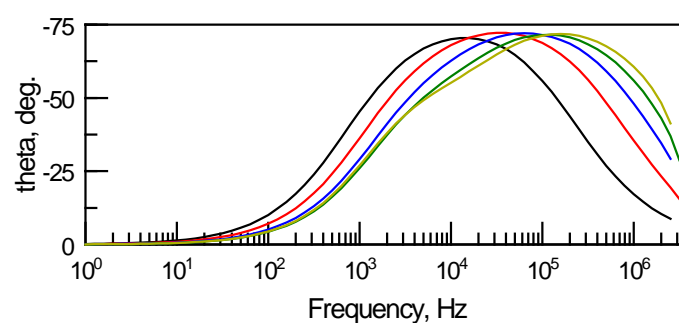
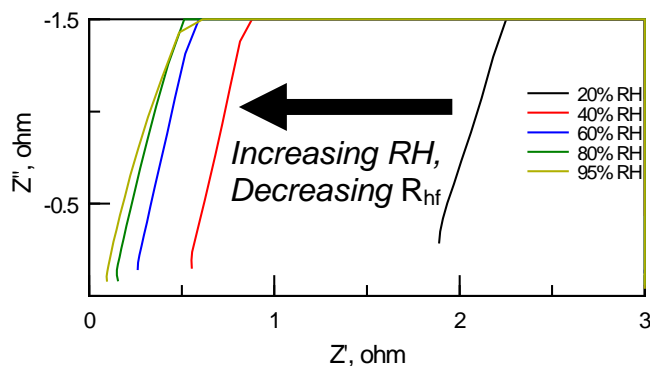
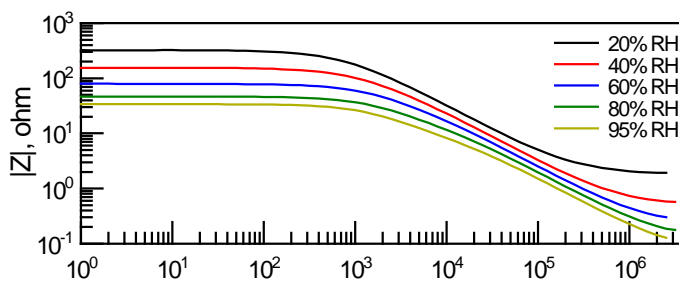
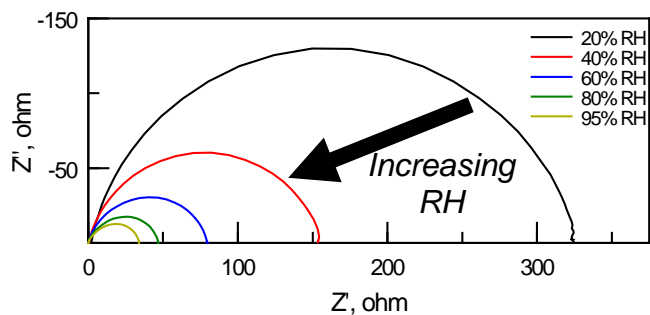


The 740 MTS uses wet-dry gas mixing for controlled, rapid RH cycling of sample environment

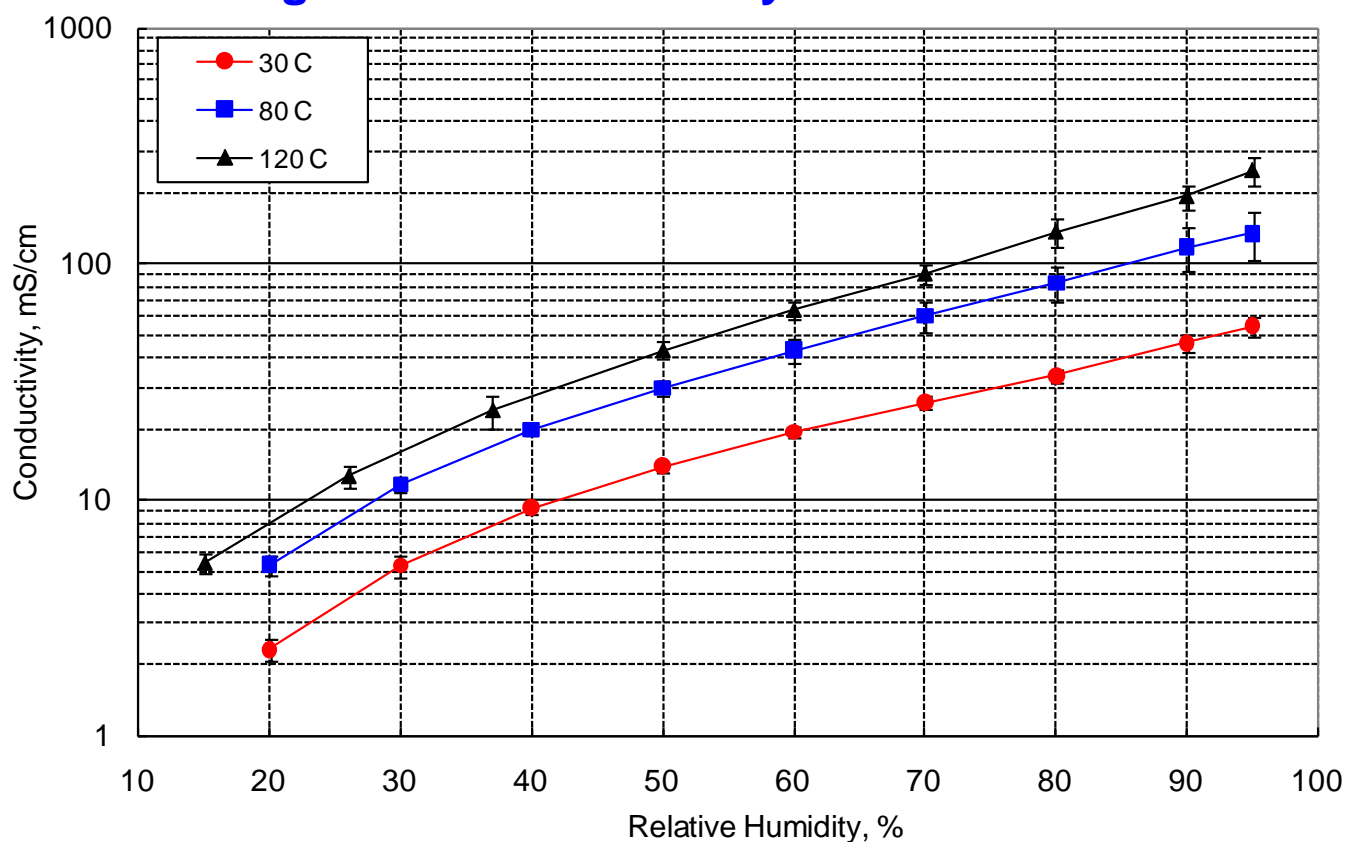
- ✓ Repeatable, reproducible and stable T & RH → ±2% from 20% to 95% RH
- ✓ Rapid RH cycling for time-efficient testing over wide RH range
- ✓ Operating range: 30 °C to >120 °C, 1 to 3 atmospheres



High frequency intercept & sample resistance obtained by fitting impedance spectra to an equivalent circuit model



Through-Plane Conductivity of Nafion[®] NR-212



System Features

- Custom **MTS4 Software** for complete measurement process control and data acquisition
- **CorrWare[®]**, **ZPlot[®]**, **MultiStat[™]**, **ZPlot-Lab[™]** & **ZView[®]** software for measurement and analysis of sample impedance
- Wet and dry gas mixing for accurate and precise RH control and rapid RH cycling
- Test chamber backpressure control, condenser and collection tank for high-temperature operation
- *In-situ* sample temperature and dewpoint measurement for real-time RH monitoring
- Control and monitoring of multiple process temperatures
- Rapid, easy cell assembly with accurate and repeatable sample compression
- Cell lock-feature for safe operation at elevated temperature, pressure and H₂ gas
- Automatic shutdown and N₂ purge on alarm condition
- Detailed cell assembly instructions and data analysis procedure
- Native USB interface to PC for easy set-up

Proven patented technology featured in
Journal of the Electrochemical Society 157(11) B1731 2010



Specifications:

Gas and Humidification System:

Humidifier:	316LL SS material, designed for 100% gas saturation, auto water fill
Mass Flow Control:	Two; Wet and Dry, 0 - 500 sccm each (allows variable wet gas % and RH control)
Sample Gas Selector:	Selects N ₂ or H ₂ /other
Gas Pressure Switches:	Two; N ₂ and H ₂ /other
Gas Dewpoint Meter:	One, capacitance-type sensor in sample chamber
Measurable Dewpoint:	0 to 100 °C
Set and Report Accuracy:	±0.25% of span, ±1 least significant digit
Set and Report Resolution:	0.1 °C
Sensor Type:	Thermocouples, Type T
Temperature (max)	180 °C (chamber, sample), 120 °C (humidifier), 130 °C (gas transfer line)

Sample Chamber:

Open/Close Mechanism:	Threaded, screw-in cell head with integrated electrodes and locking-pin
Electrode Clamp Mechanism:	Mechanical, spring-loaded, integrated with cell head
Electrodes:	Platinum, proprietary four-terminal design (U.S. Patent No. 7,652,479)
Temperature Range:	Ambient to 180 °C
Pressure Range:	Ambient to 30 PSIG (207 kPa)

Post-Chamber Gas Flow Path:

Heat exchanger, condensate collection tank, precision manual back pressure regulator, vent port

Electrochemical Interface and Impedance Measurement:

User-supplied Impedance Analyzer (Solartron Analytical 1260 FRA or Newtons4th PSM 1735 + IAI Interface recommended)

MTS4 software works with *CorrWare*[®], *ZPlot*[®], *MultiStat*[™] and *ZPlot-Lab*[™] and direct control of Newtons4th FRA

Physical and Environment:

Operating Temperature:	15 - 35 °C
Power Source:	100 - 120 VAC; 50/60 Hz
Size, cm (in.):	46 H x 28 W x 48 D (18 x 11 x 19); excluding installed cell head

Software inputs for each experiment:

Chamber, humidifier and gas transfer line temperature set point; Pre-treatment (equilibration) time; Total gas flow rate, Wet gas %, Gas type (H₂/other or N₂), and Back pressure (manually set)

Number of steps per experiment:

Up to 100

Live Data Display:

Sample temperature and dewpoint, RH value (calculated from dewpoint and sample temperature), Wet and dry gas mass flow rates, Measured impedance for a single frequency from *ZPlot*[®], remaining step time

Data File Format:

Tab delimited ASCII file. Contains time, total flow, wet and dry flow, % wet, temperatures (dewpoint, sample, chamber, humidifier, gas transfer line), RH, pressure, gas type *ZPlot*[®] impedance data saved as standard *.z file compatible with *ZView*[™].

CorrWare, *ZPlot*, *MultiStat*, *ZPlot-Lab* & *ZView* are trademarks of Scribner Associates, Inc. Nafion[®] is a registered trademark of E. I. du Pont de Nemours and Company.



150 E. Connecticut Ave., Southern Pines, NC 28387 USA
Phone: +1-910-695-8884 · Fax: +1-910-695-8886
www.scribner.com · info@scribner.com